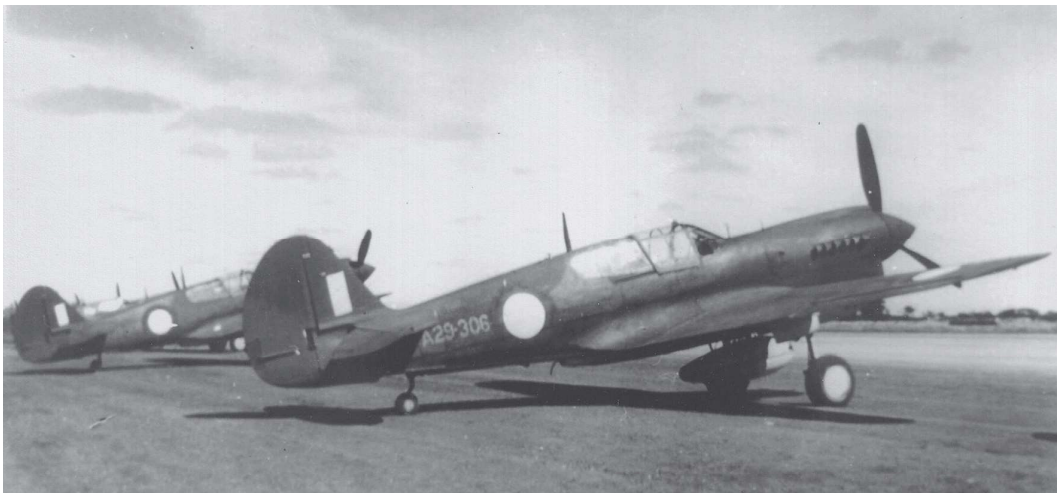
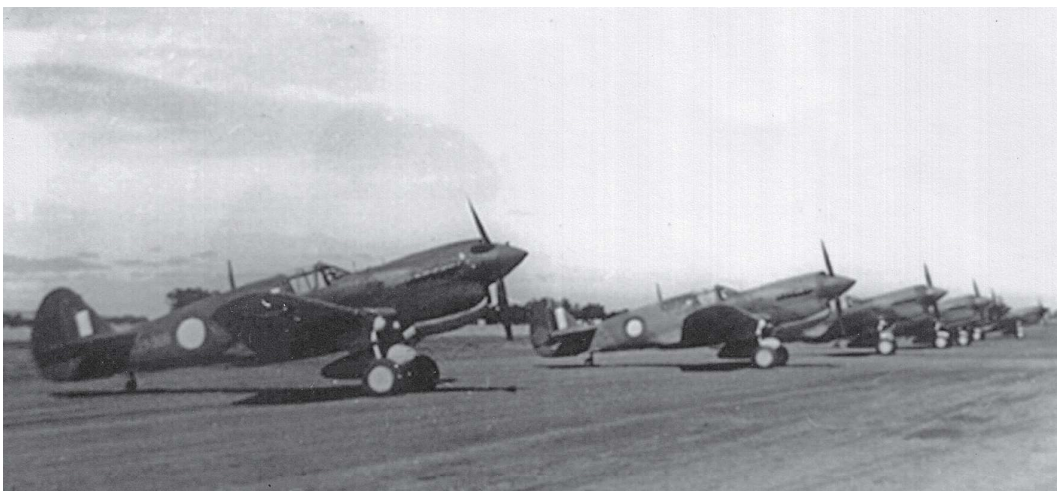




*Runway construction work underway at Gawler in early 1943. (Author)*



*No. 86 Squadron P-40M A29-306, at Gawler, was among the first batch of aircraft received by the unit on 15 March 1943. (Fred Brooks collection via Rob Richter)*



*No. 86 Squadron P-40s lined up at Gawler in March 1943. (Fred Brooks collection via Rob Richter)*